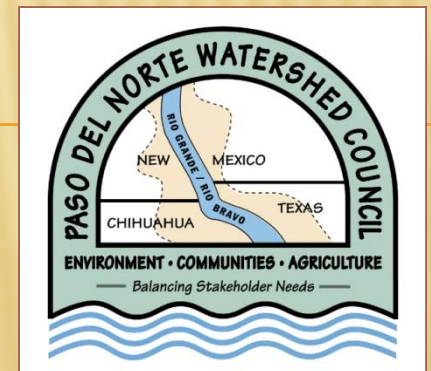


Watershed Planning to Protect and Restore New Mexico Waters with 319(h) Grant Funding



Lower Rio Grande
Watershed Tour
November 19, 2010

Chris Canavan, NM Environment Department
Hilary Brinegar, NM Department of Agriculture

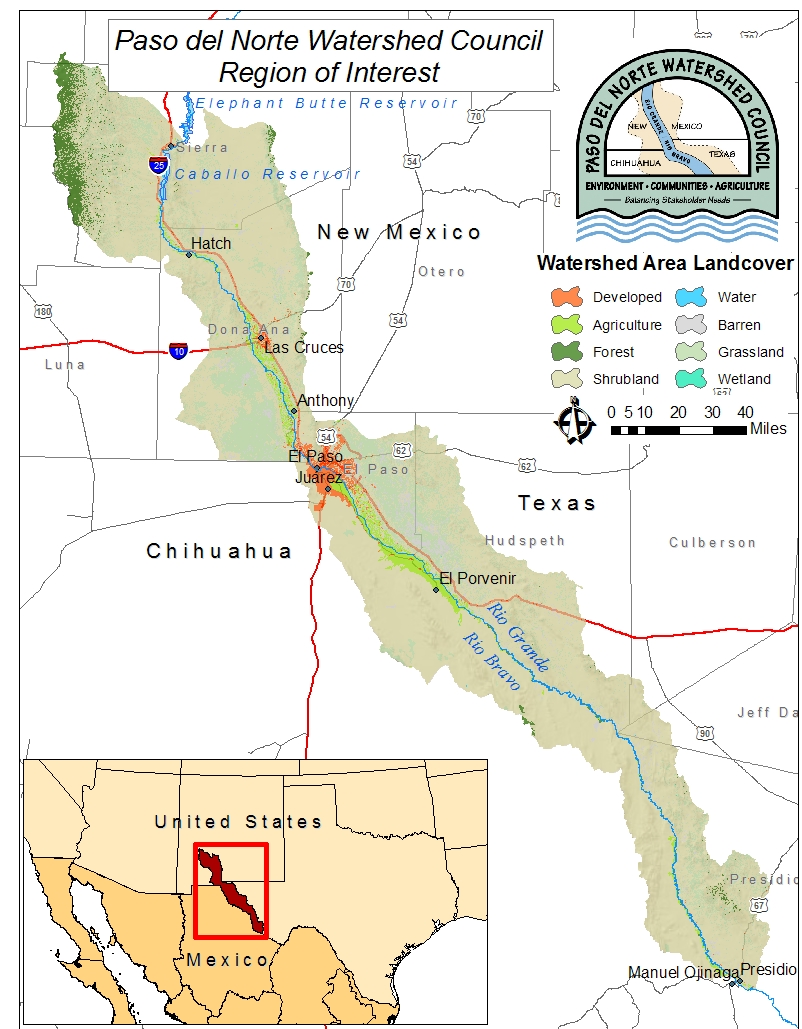


Presentation Topics

- The Paso del Norte Watershed Council
 - EPA's Elements A, B, C
 - Lower Rio Grande Watershed Planning
(Phase I and Phase II)
 - Brief overview of today's tour
-

Paso del Norte Watershed Council

The purpose of the Council is to **investigate, develop, and recommend options for watershed planning and management**, and to explore how water-related resources can best be balanced to benefit the Paso del Norte watershed ecosystem and the interests of all watershed stakeholders.





Watershed Council – Member entities

- Chihuahuan Desert Wildlife Rescue
- City of Las Cruces
- El Paso League of Women Voters
- Frontera Land Alliance
- New Mexico Department of Agriculture
- New Mexico State University
- New Mexico Water Resources Research Institute
- Rio Grande Council of Governments
- Rio Grande Restoration
- Southwest Environmental Center
- Texas AgriLife Research Center at El Paso
- Universidad Autonoma de Ciudad Juarez
- University of Texas at El Paso
- U.S. Bureau of Land Management
- U.S. Bureau of Reclamation
- U.S. Environmental Protection Agency
- U.S. Fish and Wildlife Service
- U.S. International Boundary and Water Commission
- Ysleta del Sur Pueblo

www.pdnwc.org

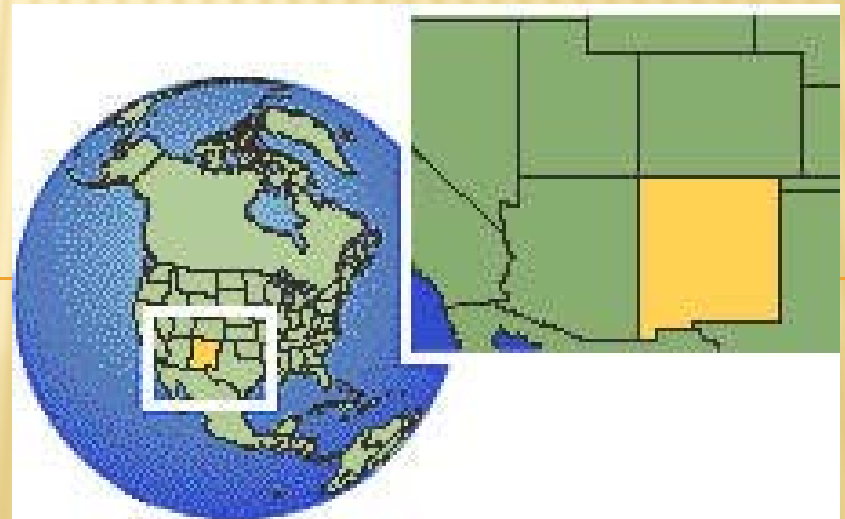


Watershed Planning with 319(h) Funds

Watershed planning can take multiple forms

ie. NRCS, BLM, USFS, EPA

We will review the foundation of watershed planning utilizing U.S. EPA 319(h) funding in New Mexico. This can vary state to state within the same EPA region.



every calculation based on experience elsewhere, fails in New Mexico.

Every
calculation
based on
experience
elsewhere,
fails in
New Mexico.

LEW A WALLACE
GOVERNOR OF TERRITORIAL NEW MEXICO
1878 - 1881

m.l.cook

The 319(h) planning process results in specialized, data-driven watershed restoration that is targeted for meeting local/regional water quality goals.



TOTAL MAXIMUM DAILY LOAD DEFINITION

A specified maximum amount of a pollutant that a waterbody can receive on a daily basis without exceeding state water quality standards.

Also known as a target capacity value.



LOWER RIO GRANDE WATER QUALITY REGULATORY HISTORY

Feb-Nov 2004

LRG Water Quality Survey

April 2006

Survey Report

Feb 23, 2007

Draft LRG TMDL

45 day comment period

April 9, 2007

Las Cruces public meeting

May 8, 2007

TMDL approval by NM WQCC

June 11, 2007

TMDL approval by EPA





The Nine Elements of 319(h) Planning

- a. Identification of causes and sources
- b. Estimate of needed load reductions
- c. Description of management measures
- d. Estimate of technical and financial assistance
- e. Information / education component
- f. Schedule for implementation
- g. Description of measureable milestones
- h. Criteria developed to determine if load reductions are achieved
- i. Monitoring component to evaluate effectiveness

CWA Section 319(h) Grant Guidelines:

http://www.epa.gov/owow_keep/NPS/cwact.html



Element a

IDENTIFICATION OF CAUSES AND SOURCES

The cornerstone for all elements of watershed based planning.

Watershed characterization:

- Physical and natural features
- Land use and activities
- Population
- Existing data/baseline data



Element a

IDENTIFICATION OF CAUSES AND SOURCES

Gather and inventory baseline water quality data.

Analyze data! ID data gaps, develop sampling programs.

Tools:

- GIS (Geographic Information Systems)
- Databases
- Statistics
- Models
- Google Earth
- Ground-truthing





Pollutant Causes and Sources

CAUSE = TMDL (the documented water quality exceedance)

The TMDL allocates the load between point sources and nonpoint sources, but **does not quantify the nonpoint sources.**



Identifying and quantifying NPS is a main task for Element a.

SOURCE = has geographic location, may be attributed to an activity in the watershed, may have seasonal or climatic fluxes



Pollutant Causes and Sources, Con't

Ask the questions:

Where are the greatest sources of the pollutant located?

Define on sub-watershed/site scale.

What land use activity is related to the pollution?

Examine local land use activity.



Geographical definition and source-specific identification are critical.



Element b

ESTIMATE OF NEEDED LOAD REDUCTIONS

Based on source identification, water quality goals, and the effectiveness of management measures (MMs).

Two separate components:

1. Planning: estimate reductions needed to meet water quality goals. (Do goals equal WQ standards?)
2. MM Implementation: estimate expected reductions based on implementing management measures (Element c). Consider synergistic effects.



Element b

ESTIMATE OF NEEDED LOAD REDUCTIONS

MM = management measure

Process (planning component):

1. Allocate load estimates per source
2. Choose suite of MMs (Element c), determine utility and location of implementation
3. Estimate load reductions per MM

Resources: stakeholder input, local knowledge base, technical expertise, data management, modeling



Element b

ESTIMATE OF NEEDED LOAD REDUCTIONS

An inexact science!

Factors: natural variability in water quality, MM performance, time-consuming process.

Others: access to data and technical expertise.



Element c

DESCRIPTION OF MANAGEMENT MEASURES

What measures are appropriate and effective for achieving your goals?

Depends on pollutants of concern and sources of pollution.

Lots of choices for MMs.

Recommendations could look at an integrated combination of management and restoration.

240 Filter Strip

TMDL Practice Sheet

LEVEL 200: ACTIVE MANAGEMENT



DESCRIPTION

A strip or area of herbaceous vegetation situated between cropland, grazing land, or disturbed land (including forest land) and environmentally sensitive areas.

PURPOSE

A filter strip removes pollutants from runoff before the material enters a body of water. It also serves as a buffer between water and the fields above the water so that pesticides and other chemicals are not applied directly adjacent or into the water body. Filter strips also reduce sedimentation of streams, lakes and other bodies of water.

PRACTICE CATEGORIES

Stream Bank Protection
Recreation Management
Construction Site Management
Stormwater Control
Mining Lands Management
Cropland Management

TMDL SOURCES TREATED

Animal Feeding Operations
Disturbed Areas
Stream Erosion
Agricultural Practices

POLLUTANTS ADDRESSED

Sediments	Nutrients & Organics
Salinity	Heavy Metals
Pesticides	Low Dissolved Oxygen
Pathogens	

LOAD REDUCTION POTENTIAL

LOW MEDIUM HIGH

ESTIMATED TIME FOR LOAD REDUCTION

IMMEDIATE MONTHS- 2 YEARS > 2 YEARS

EXPECTED MAINTENANCE

LOW MEDIUM HIGH

revised: 2/04

27

240 Filter Strip

TMDL Practice Sheet (cont.)

LEVEL 200: ACTIVE MANAGEMENT

POTENTIAL TREATMENT AREAS

Agricultural Lands
Developed Lands

ASSOCIATED TMDL PRACTICES

Exotic Removal
Seeding
Fencing

PERMITTING REQUIREMENTS

None

APPLICABLE NRCS/OTHER REFERENCES

NRCS-FOTG
393 Filter Strip

PLANNING CONSIDERATIONS

Filter strips should be strategically located to reduce runoff, and increase infiltration and ground water recharge throughout the watershed.

Filter strips for the single purposes of wildlife/beneficial insect habitat or to enhance watershed function should be strategically located to intercept contaminants thereby enhancing the water quality of the watershed.

To avoid damage to the filter strip consider using vegetation that is somewhat tolerant to herbicides used in the upslope crop rotation.

Consider using this practice to enhance the conservation of declining species of wildlife, including those that are threatened or endangered.

Consider using this practice to protect National Register listed or eligible (significant) archaeological and traditional cultural properties from potential damaging contaminants.

Filter strip size should be adjusted to a greater flow length to accommodate harvest and maintenance equipment.

revised: 2/04

28



Element c

DESCRIPTION OF MANAGEMENT MEASURES

Are they socially acceptable?



Other factors for selection:

Location (land ownership, access), estimated load reductions (MM effectiveness), legal/regulatory requirements, costs, unintended consequences.

Lower Rio Grande

319(h) Project Area
= 29,267 mi²

with 107 river miles

Varied land use

35% BLM

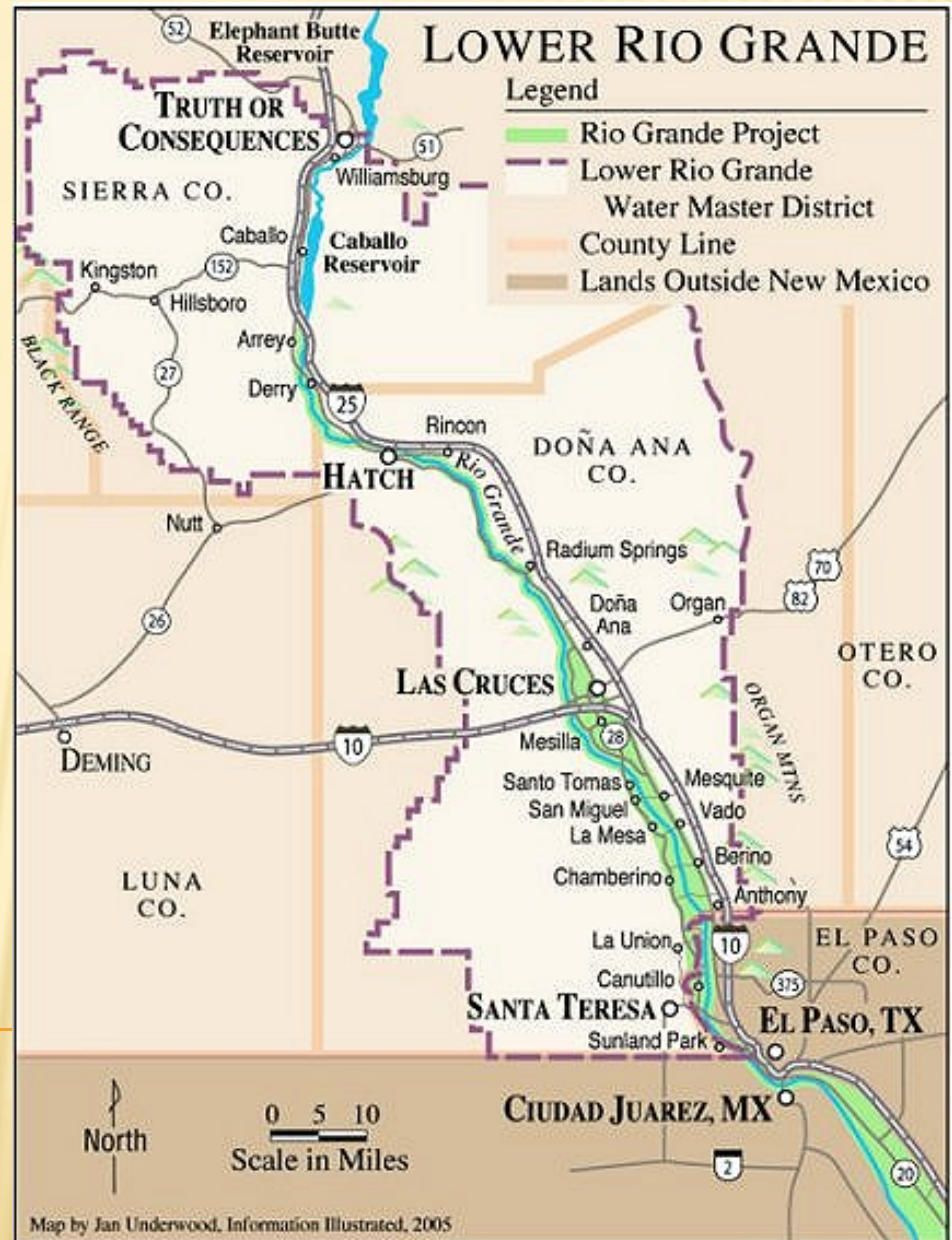
32% private

18% USFS

12% state

2% BOR

Less than 1% DOD





Las Cruces
Doña Ana County

Population – 86,268
Population – 206,419





Rio Grande Canalization Project

130 miles of levees





Seldon Canyon – 8.6 miles

No levees





**457 miles of agricultural drains.
The only perennial tributaries in the watershed.**





**457 miles of agricultural drains.
The only perennial tributaries in the watershed.**



Rincon Arroyo

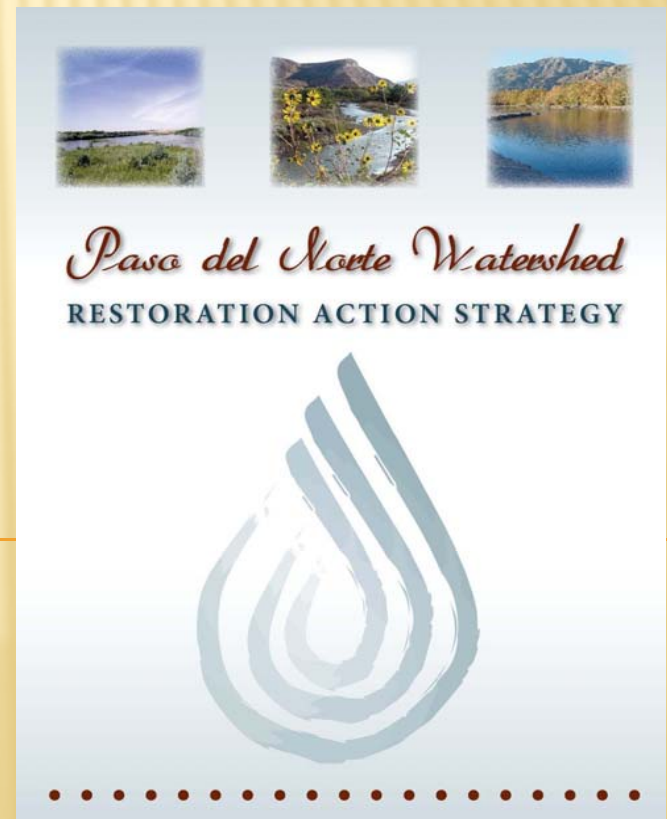


Photos by Brian Hanson

July 2010 storm

Lower Rio Grande Watershed Based Plan

- The Paso del Norte Watershed Council received 319(h) grants in 2006 (Phase I) and 2010 (Phase II)
- The Clean Water Committee (Includes Council members, Project contractors and other participants.)
- NMDA as fiscal agent
- NMED as project officer





Phase I

- Phase I activities included data and biological analyses as well as community outreach
- Resulted in Watershed Restoration Action Strategy
- Phase I conclusion: insufficient data for spatial and temporal characterization of bacteria



Phase I Recommendations

Water Quality Sampling Program

Continued development of BMP recommendations and long-term monitoring strategy

Continued stakeholder outreach and education

Phase II

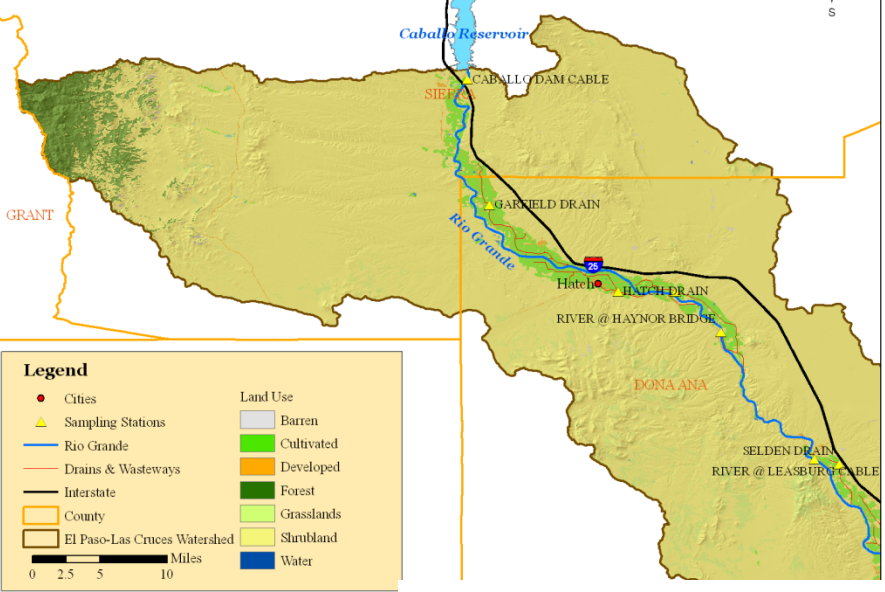
Activities:

- Water quality sampling and monitoring program
- Bacterial source tracking study
- Data analyses
- Outreach and education program

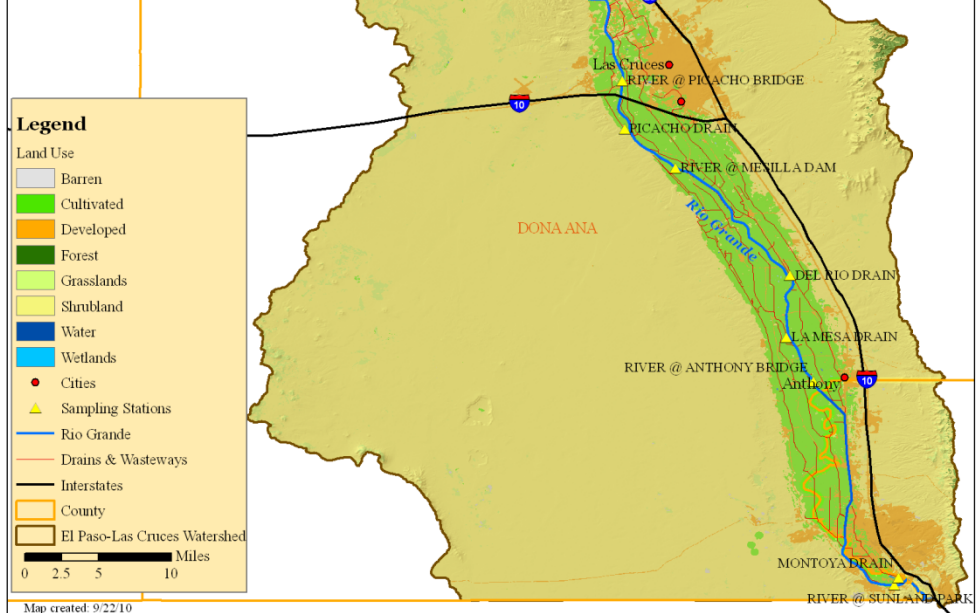
Contractors include the Elephant Butte Irrigation District, Dr. Phil King and Dr. Geof Smith of NMSU.

Brian Hanson (NMDA) is the watershed coordinator.

El Paso-Las Cruces Watershed above Leasburg Dam



El Paso-Las Cruces Watershed below Leasburg Dam



Map created: 9/22/10

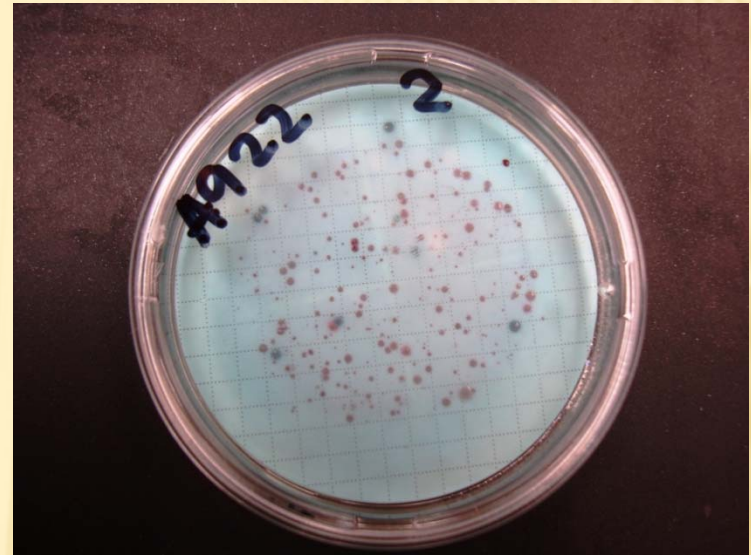
Element a

IDENTIFICATION OF CAUSES AND SOURCES

Monitoring program consists of sampling the Rio Grande, agricultural drain return flows, and opportunistic stormwater sampling.



LRG BST Samples, October 2010



Element a

IDENTIFICATION OF CAUSES AND SOURCES

Phase II

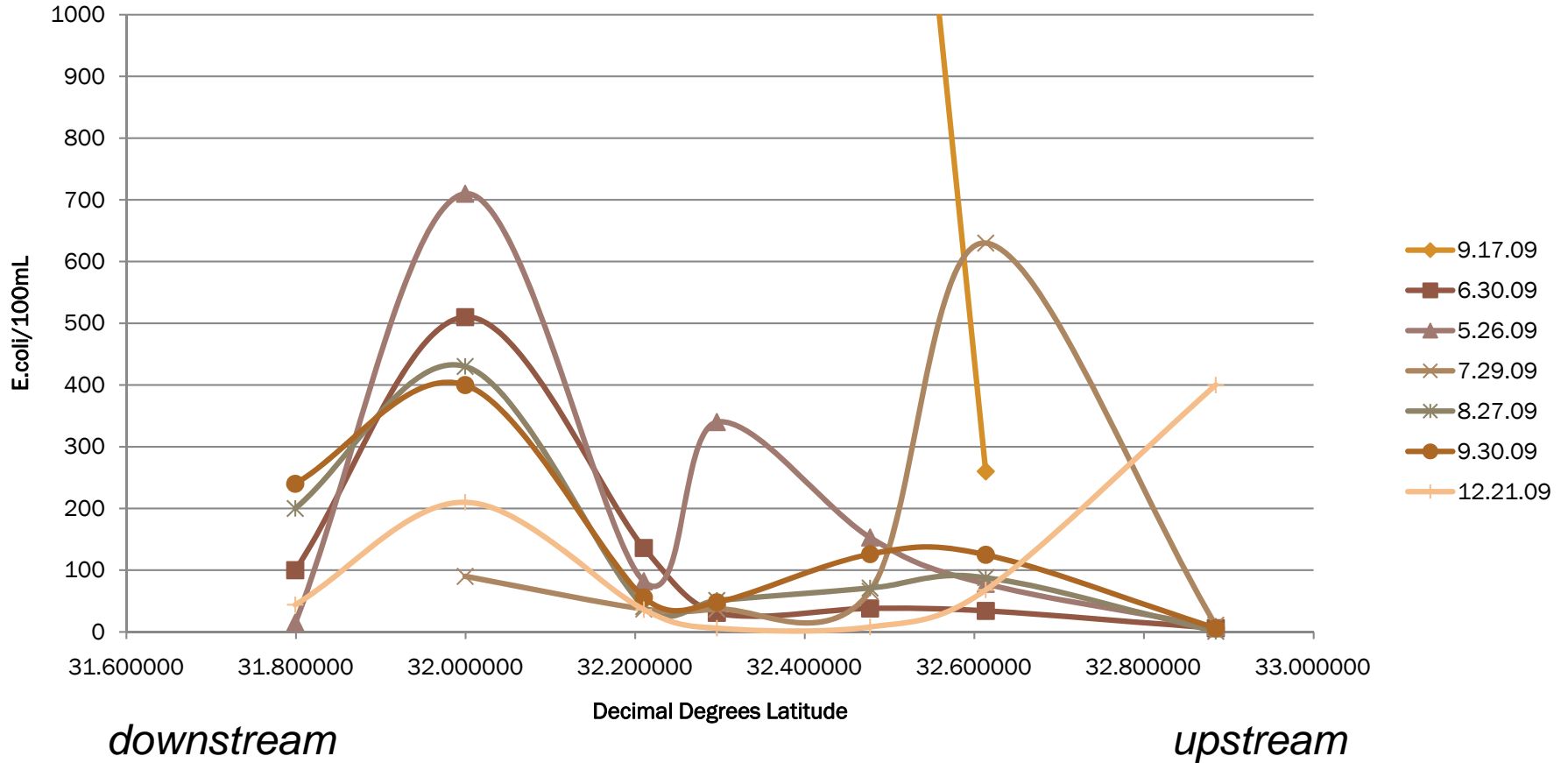
Data is being analyzed for trends, looking for “hotspots”, utilizing BASINS model.

Identified source areas will be evaluated for land use activities.

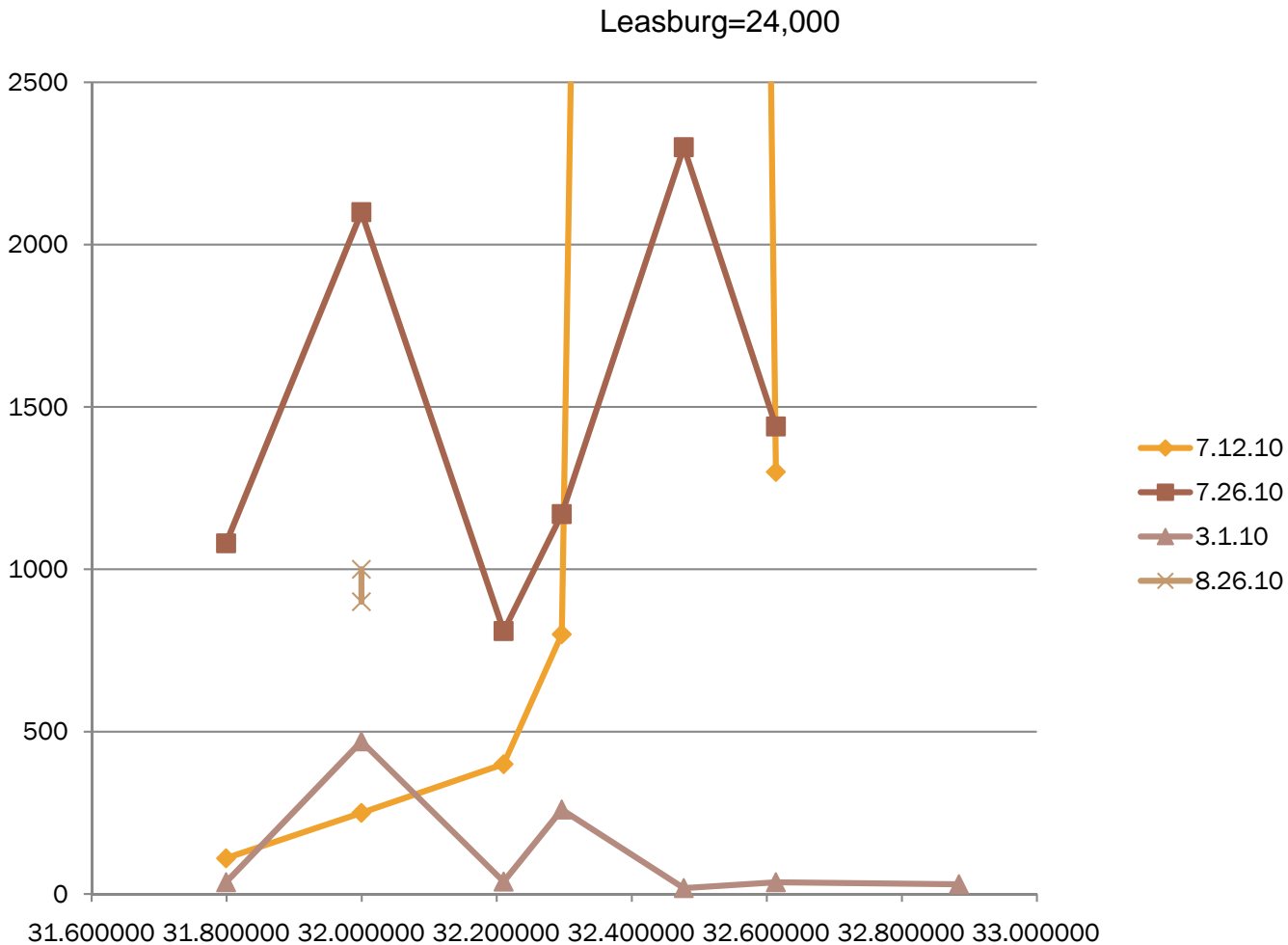
Four sites will be chosen for microbial source tracking analysis (two were selected in September 2010).



2009 River Timepoints Greater than 400 E.coli/100mL



2010 River dates where > 400 E.coli/100 mL observed



2 of 3 “peaked” at Anthony Bridge. Added duplicate samples on Aug. 26

NEXT STEPS FOR LOWER RIO GRANDE

- ✘ Continued analysis of water quality data
- ✘ Identify two additional source tracking sites
- ✘ Land use analysis and watershed characterization
- ✘ Completing BASINS *E. coli* model analysis
- ✘ Utilizing source identification results to estimate loading and determine mitigation practices
- ✘ Continued stakeholder outreach and watershed education

References

U.S. EPA *Handbook for Developing Watershed Plans to Restore and Protect Our Waters*

http://water.epa.gov/polwaste/nps/handbook_index.cfm

U.S. EPA Region 6

Texas Watershed Planning Short Course

May 10-14, 2010 in Bandera, Texas

Clean Water Act Section 319:

http://www.epa.gov/owow_keep/NPS/cwact.html

This presentation will be available at www.pdnwc.org



Today's Tour

- Stop 1 Rodeo Arena
- Stop 2 Broad Canyon
- Stop 3 Selden Drain Test Bed
- Stop 4 IBWC Restoration Site
- Stop 5 Picacho Bridge (lunch site)

Logistics

Drivers?

Questions? Comments?

Chris Canavan

chris.canavan@state.nm.us

575-647-7926

Hilary Brinegar

hbrinegar@nmda.nmsu.edu

575-646-2642



Paso del Norte Watershed Council

www.pdnwc.org